

# Café Racer



**SANREMO**  
COFFEE MACHINES

**Born to run**

*The maximum result in the cup,  
one coffee after another*

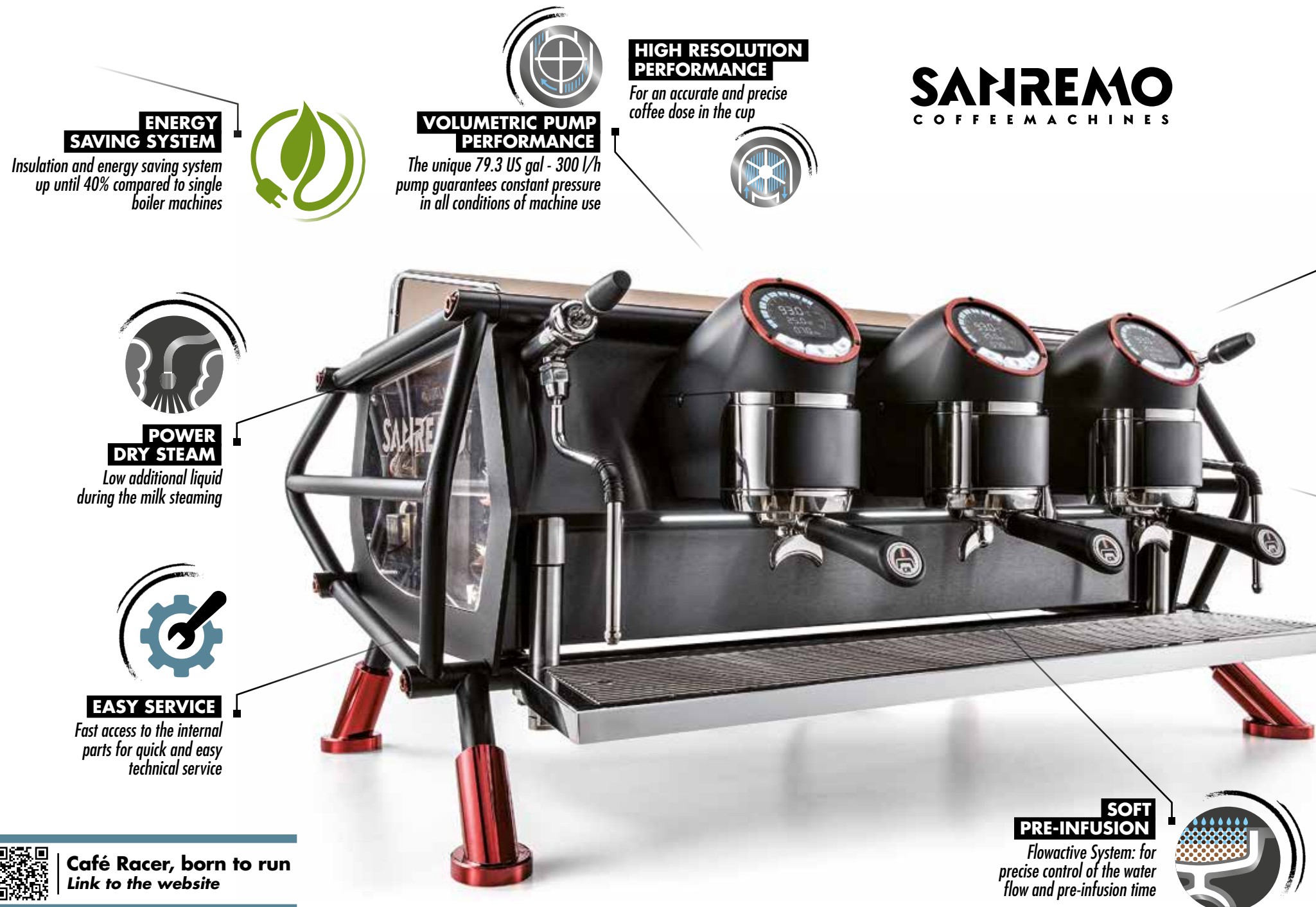




# SANREMO

COFFEE MACHINES

Take a ride,  
explore its essence



## ENERGY SAVING SYSTEM

Insulation and energy saving system up until 40% compared to single boiler machines



## VOLUMETRIC PUMP PERFORMANCE

The unique 79.3 US gal - 300 l/h pump guarantees constant pressure in all conditions of machine use



## HIGH RESOLUTION PERFORMANCE

For an accurate and precise coffee dose in the cup



## POWER DRY STEAM

Low additional liquid during the milk steaming

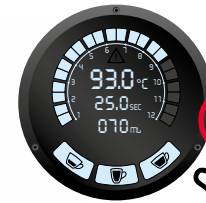


## EASY SERVICE

Fast access to the internal parts for quick and easy technical service

## EVERYTHING UNDER CONTROL

System digital display to provide visibility of all working parameters



Smart-touch setting of the individual groups



## HEART OF STEEL

For maximum thermal stability:

- Groups in AISI 316L, weight 17.6 lb / 8 kg each
- Portafilters AISI 316
- Boilers AISI 316

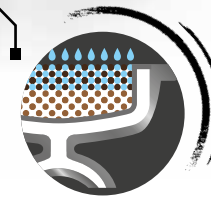
## ADJUSTABLE HEIGHT WORK SURFACE

Innovative Sanremo "All in one" suspension system that allows cups of different shapes and heights (adjustable from 3.35 to 5.90 inches / from 85 to 150 mm)



## SOFT PRE-INFUSION

Flowactive System: for precise control of the water flow and pre-infusion time



Café Racer, born to run  
Link to the website

## Characteristics



**AISI 316L STEEL GROUPS WITH 17.6 lb / 8 kg PURE STEEL**  
Exclusive Sanremo design ensure exceptional thermal stability and maximum resistance to oxidation and lime scale.



**AISI 316 STAINLESS STEEL PORTAFILTER WITH "COMPETITION FILTER"**  
Exclusive Sanremo design, with shape and volume designed to capture the best coffee aromas and fragrances.



**AISI 316L STAINLESS STEEL FREE MOTION STEAM TAPS**  
Flexible control system for producing and dispensing steam.



**AISI 316L STAINLESS STEEL STEAM WAND "COLD TOUCH"**  
Anti-burning feature even in conditions of prolonged use, fitted with "Latte Art" high-performance steam terminals.



**PROGRAMMABLE ELECTRONIC PRE-INFUSION**  
Allows control with 0.1 second tolerance of the flow of water that wets the coffee bed, with programming of 4 different profiles for each group.



**INDEPENDENT ADJUSTMENT OF THE PID INFUSION WATER TEMPERATURE**  
Precision setting (gradient  $\pm 0.5$  °C with measured constancy lower than 0.2°C).



**SYSTEM DISPLAY**  
Visibility of all the machine functions: temperatures, pressures and levels.



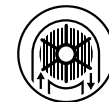
**COFFEE UNIT SINGLE DISPLAY**  
Control of all coffee extraction parameters.



**MIXED INFUSION HOT WATER FOR TEA AND HERBAL TEAS**  
Instantaneous mixing of fresh water and steam for a better chemical and organoleptic quality.



**HIGH PERFORMANCE VOLUMETRIC PUMP 79.3 US gal - 300 l/h \*\*\***  
Pressure stability also with prolonged and contemporary use of more than one group.



**HIGH PERFORMANCE FLOWMETERS**  
For an accurate and precise coffee dose in the cup.



**STEAM CONTROL ADJUSTABLE ELECTRONIC PRESSURE SWITCH**  
Sensor with 0.02 bar precision that allows the chosen pressure and steam in the boiler to be kept constant in all conditions of use.



**PROGRAMMABLE CUP WARMER TEMPERATURE**  
Allows the cups to be kept at the optimum temperature in the most different climatic conditions.



**ELECTRONIC AUTO-LEVEL**  
Through an electronic level probe the boiler is automatically filled and maintained to the right filling level.



**LED LIGHTING OF THE WORK AREA**  
Allows efficient working in any condition of environmental lighting.



**AUTO-DIAGNOSIS, STATISTICAL DATA, SCHEDULED MAINTENANCE**  
Maintenance can be scheduled according to litres or number of coffees dispensed.



**AUTO-ON, AUTO-OFF AND DAY-OFF FUNCTION**  
Programmable on-off timer for each day and/or daily timetables.



**AUTOMATIC CLEANING CYCLE**  
Process for coffee groups cleaning.



**BOILER WATER REGENERATION**  
Ensures resetting of the optimum chemical characteristics of the water and correct mineralisation.



**GROUP FLUSHING**  
With a simple pressure of the button a small quantity of water is dispensed to allow the group to be always clean.

### Optional



**STAINLESS STEEL NAKED PORTAFILTERS**



**HIGH POWER STEAMER TERMINAL**



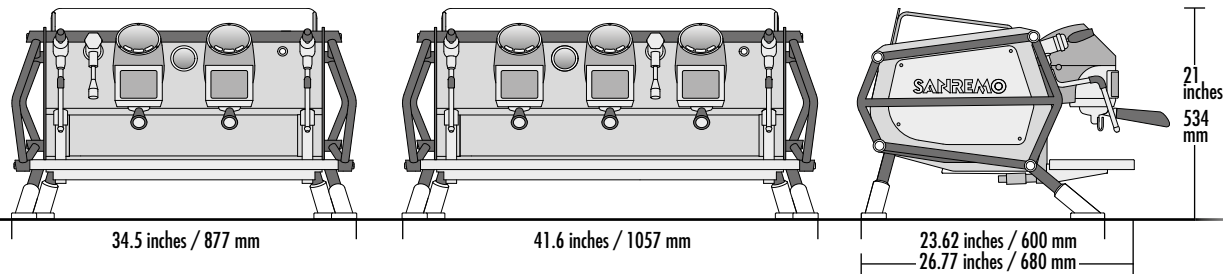
**EXTERNAL VOLUMETRIC PUMP**

(bigger holes diameter)



# Café Racer

## Versions



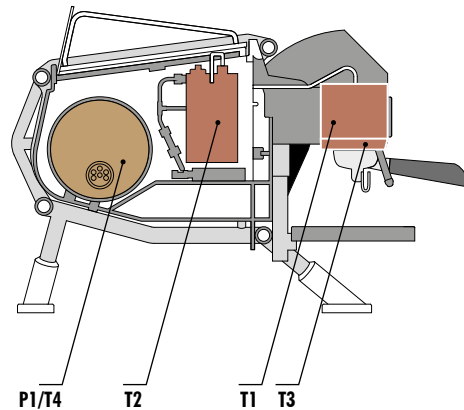
- 2 group CR**
- 2 steam taps
  - 1 water tap
  - 1 one-cup portafilters
  - 2 two-cup portafilters

- 3 group CR**
- 2 steam taps
  - 1 water tap
  - 1 one-cup portafilters
  - 3 two-cup portafilters



### MULTIBOILER SYSTEM

Sanremo Café Racer multiboiler system ensures a new level of thermal precision thanks to the 4 points of temperature PID control.



Technical data		2 group	3 group
voltage	V	220-240 1N / 380-415 3N	
power input	kW	7.03	8.35
steam boiler capacity	US gal / lt	2.11 / 8	2.64 / 10
services boiler resistance power	kW	3.85	3.85
external pump power	kW	0.165	0.165
preheating boiler capacity	US gal / lt	0.264 / 1.0	0.396 / 1.5
preheating boiler resistance power	kW	1.0	1.5
cup-heater power	kW	0.16	0.2
units boiler capacity	US gal / lt	0.264 / 1.0	0.396 / 1.5
units boiler resistance power	kW	1.6	2.4
net weight	lb / kg	214 / 97	265 / 120
gross weight (with shipping crate)	lb / kg	267 / 148	377 / 171



NAKED

Choose your style,  
dress up your Café Racer



FREEDOM



CUSTOM





## Built for free spirits

Sometimes designs come to be to achieve a precise objective; other times to make a dream come true; or to follow an ambition.

But this is our story of a coffee machine conceived in absolute freedom. No hurry, no restraints, no obligations: except to guarantee impeccable performance to baristas all over the world.

Hence the precise and accurate intuition: to enclose the best of Sanremo technology in a sturdy and stylish chassis: like a motorcycle chassis of the legendary café racer.



From the idea, to the design, to the Sanremo R&D team, to SWAT (*Sanremo World Academy Team*): the project has gone around the world a couple of times. It has been shared with the best operators in the industry and it has become a reality. Café Racer by Sanremo is a powerful and reliable machine, easy-to-handle, versatile and stylish.

A unique, high performance coffee machine, ready to be desired by all coffee professionals.







**NAKED**  
look into the soul



With its unmistakable transparent sides, the **Naked Café Racer** allows you to see its powerful heart of pure stainless steel.

The chassis is a sturdy frame with a functional design, supporting and enhancing the essence of the coffee machine.

The **Naked Café Racer** is available in 2 finishes: black and steel. Both available with some components in black or red.

\* rings, bolts, feets, boiler insulation

✓ **Naked Black**   
Black ●

✓ **Naked Black**   
Red ●

✓ **Naked Steel**   
Black ●



✓ **Naked Steel**   
Red ●







✓ **Freedom Black**   
Black | P1 | P2 | P3 | P4 

✓ **Freedom Steel**   
Black | P1 | P2 | P3 | P4 



**FREEDOM**  
option to fit any character



The Freedom Café Racer has 4 coloured side panels available that are enhanced with the rear-lit logo. The classic logo design is inspired by *café racer* motorcycles. A tradition rich in stories, emanating character, style and personality.

The machines are available in versions with a black or steel chassis,   plus an exclusive red finish on some components\* . ● ●

\* rings, bolts, feet



✓ **Freedom Black**   
Red | P4 

✓ **Freedom Steel**   
Red | P4 





**\_ CUSTOM**

welcome free spirits



Welcome to the Custom world, greatest potential expression of the entire project named "Cafè Racer": customization and uninterrupted evolution. Some versions have already become real icons. Choose your style and get on your exclusive Cafè Racer.



**\_ Renegade**

Manually oxidised copper, reddish brown brass and pure hand-sewn natural leather: the **Renegade Cafè Racer** exudes originality and a strong character in each and every feature.

The lateral pockets, in natural leather as well, are an optional for those who are looking for a further characterisation: with a resealable flap or with different glove boxes.

- handmade finishes [
-  **Dark green**
  -  **Oxidized copper**
  -  **Brown leather**
  -  Polished brass
  -  Oxidized brass







**\_ CUSTOM**



**\_ Dolomiti**

A totally black edition designed for the most exclusive locations: black satin stainless steel, naturally dyed leather and dark chrome finishing. Pure essentiality of materials and design, for a version of incomparable elegance.

- hand-sewn
-  **Matt black**
  -  **Black steel**
  -  **Black leather**
  -  Dark chrome
  -  Stainless steel







\_ CUSTOM



## \_ Moto di Ferro

Just out of the workshop, it has already become a legend: because this customization has actually been designed and built in a real garage of custom bikes from which it takes its name. To drive it, or rather to use it, is something for the few, destined to real rebellious spirits.

- **Matt black**
- **Satinized aluminum**
- **Stainless steel**
- **Black**



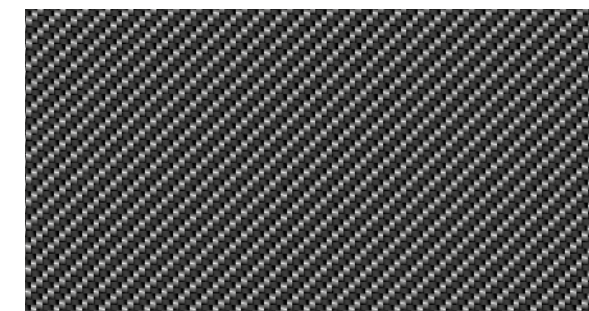
\_ CUSTOM



## \_ Racing

At the first glance, the frame recalls speed, performance and winning character: the carbon finishing and the bright colours are designed for those who love to be on the track with a coffee machine designed to meet everyday challenges.

- **Gloss red**
- **Matt white**
- **Carbon**
- **Stainless steel**
- **Black**





## \_ Black & White

\_ CUSTOM

It's the most popular version: the elegance of white elements and the sophistication of black details combined together in a model that satisfies coffee shops trends.



- **Matt white**
- ○ **Stainless steel**
- **Matt black**
- **Matt white**

## \_ Full White

Pure white without any compromise as the drip tray. One of the most amazing version with the stronger identity ever.



## \_ White & Wood Standard

\_ CUSTOM

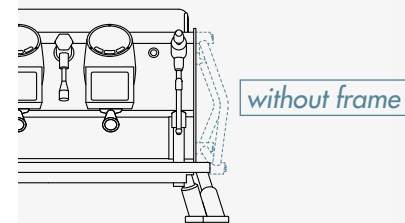
Simple and clean, the natural oak matches the white dye with elegant naturalness.



- **Matt white**
- **Natural oak**
- ○ **Stainless steel**
- **Natural oak**
- optional* □ **Matt white tray**

## \_ White & Wood Slim

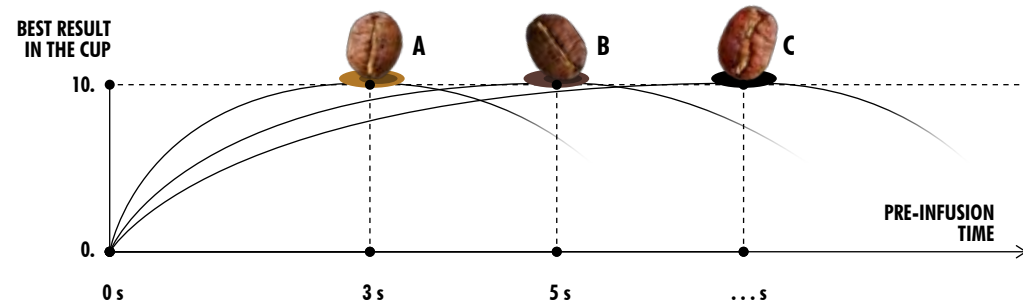
Without lateral frame, the White & Wood Slim version discreetly fits in spaces with a minimal design.





## Pre-infusion made to measure

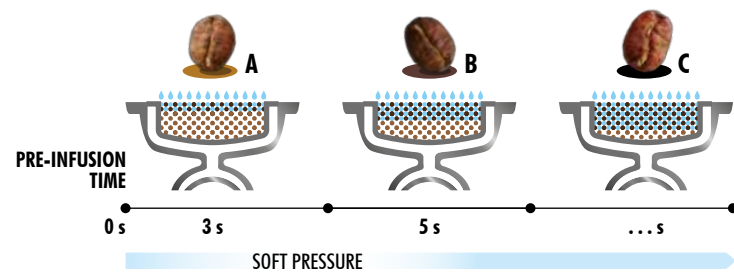
easily navigate the grouphead display



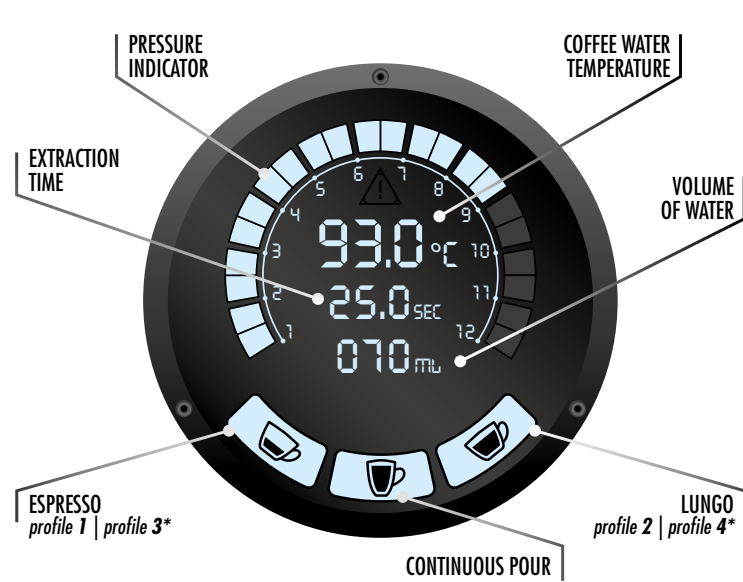
Examples of different coffee types:

- BLEND / A
- BLEND / B
- SINGLE ORIGIN / C

Every single origin or coffee blend has different requirements. For a perfect and homogeneous extraction of coffee solubles, it is fundamental to be able to control the elements of pre-infusion.



Pre-infusion is the first phase of espresso brewing. Its primary function is to saturate and prepare the coffee bed for optimal extraction. Pre-infusion also allows uniform delivery and aids in preventing channeling.



Through the display you can easily program each group for:

- pre-infusion time
- volume of water for extraction
- temperature

For each group you can save 4 different profiles, as well as the continuous dispensing function.

STANDARD SELECTION  
> two profiles

\* DOUBLE PRESS  
> four profiles



STAND-BY



PRE-INFUSION



INFUSION

## Everything under control

discover the functions of the digital system display

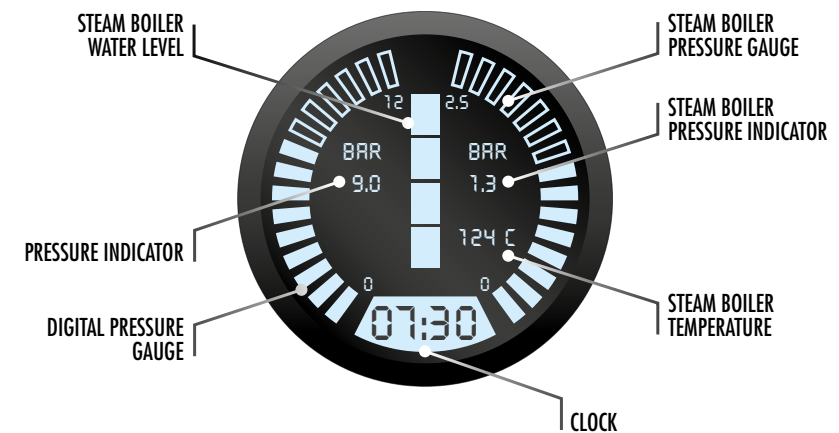
A look is all it takes: pressure, temperature and water levels are constantly monitored by high-precision electronic sensors, which immediately show real-time values and volumes with absolute reliability.

The display is also a handy programming interface for the maintenance technician.



The display allows the barista to:

- check and program the pressure, temperature and water levels
- collect statistics of the number of coffees, water dispensed, water consumed
- program days and times for switching on and off
- receive warnings for cleaning, washing and component malfunctions
- schedule maintenance
- carry out auto-diagnosis



## Foam with an artist's touch

high-performance steam function



Use the best Sanremo technology, with impeccable performance, to give free rein to your creativity:

- dedicated steam boiler
- free motion steam taps
- cool-touch steam wand
- high capacity and fast recovery

